



## Minireview

# The spectrum of pyruvate dehydrogenase complex deficiency: Clinical, biochemical and genetic features in 371 patients

Kavi P. Patel <sup>a</sup>, Thomas W. O'Brien <sup>b</sup>, Sankarasubramon H. Subramony <sup>c</sup>,  
Jonathan Shuster <sup>d</sup>, Peter W. Stacpoole <sup>a,b,\*</sup>

<sup>a</sup> Departments of Medicine (Division of Endocrinology and Metabolism), College of Medicine, University of Florida, Gainesville, FL 32611, USA

<sup>b</sup> Biochemistry and Molecular Biology, College of Medicine, University of Florida, Gainesville, FL 32611, USA

<sup>c</sup> Neurology, College of Medicine, University of Florida, Gainesville, FL 32611, USA

<sup>d</sup> Epidemiology and Health Policy Research, College of Medicine, University of Florida, Gainesville, FL 32611, USA

## ARTICLE INFO

## Article history:

Received 2 September 2011

Received in revised form 27 September 2011

Accepted 27 September 2011

Available online 7 October 2011

## Keywords:

Congenital lactic acidosis

Dichloroacetate

Neuroimaging

Ketogenic diet

Pyruvate dehydrogenase complex

Thiamine

## ABSTRACT

**Context:** Pyruvate dehydrogenase complex (PDC) deficiency is a genetic mitochondrial disorder commonly associated with lactic acidosis, progressive neurological and neuromuscular degeneration and, usually, death during childhood. There has been no recent comprehensive analysis of the natural history and clinical course of this disease.

**Objective:** We reviewed 371 cases of PDC deficiency, published between 1970 and 2010, that involved defects in subunits E1 $\alpha$  and E1 $\beta$  and components E1, E2, E3 and the E3 binding protein of the complex.

**Data sources and extraction:** English language peer-reviewed publications were identified, primarily by using PubMed and Google Scholar search engines.

**Results:** Neurodevelopmental delay and hypotonia were the commonest clinical signs of PDC deficiency. Structural brain abnormalities frequently included ventriculomegaly, dysgenesis of the corpus callosum and neuroimaging findings typical of Leigh syndrome. Neither gender nor any clinical or neuroimaging feature differentiated the various biochemical etiologies of the disease. Patients who died were younger, presented clinically earlier and had higher blood lactate levels and lower residual enzyme activities than subjects who were still alive at the time of reporting. Survival bore no relationship to the underlying biochemical or genetic abnormality or to gender.

**Conclusions:** Although the clinical spectrum of PDC deficiency is broad, the dominant clinical phenotype includes presentation during the first year of life; neurological and neuromuscular degeneration; structural lesions revealed by neuroimaging; lactic acidosis and a blood lactate:pyruvate ratio  $\leq 20$ .

© 2011 Elsevier Inc. All rights reserved.

## Contents

1.	Introduction . . . . .	35
2.	Material and methods . . . . .	35
2.1.	Source material . . . . .	35
2.2.	Definition of PDC deficiency . . . . .	35
2.3.	Clinical features . . . . .	36
2.4.	Metabolites . . . . .	36
2.5.	Neuroimaging . . . . .	36
2.6.	Statistical analysis . . . . .	36
3.	Results . . . . .	36
3.1.	Clinical signs . . . . .	36
3.2.	Biochemical features . . . . .	36
3.3.	Neuroimaging findings . . . . .	37
3.4.	Molecular genetics . . . . .	37
3.5.	Clinical Outcome . . . . .	37

\* Corresponding author at: UF College of Medicine, 1600 SW Archer Road M2-238, P.O. Box 100226, Gainesville, FL 32610, USA. Fax: +1 352 273 9013.  
E-mail address: [pws@ufl.edu](mailto:pws@ufl.edu) (P.W. Stacpoole).

3.6. Other associations . . . . .	38
3.7. Treatment . . . . .	38
4. Discussion . . . . .	38
5. Conclusions . . . . .	40
Acknowledgments . . . . .	40
References . . . . .	40

**1. Introduction**

The mitochondrial pyruvate dehydrogenase complex (PDC) catalyzes the rate-limiting step in the aerobic glucose oxidation and is thus integral to cellular energetics [1,2] (Fig. 1). It comprises multiple copies of three enzymatic subunits: pyruvate dehydrogenase (E1), dihydrolipoamide transacetylase (E2), and dihydrolipoamide dehydrogenase (E3), as well as an E3 binding protein (BP). The E1 component is a heterotetramer of 2 alpha and 2 beta subunits. The gene for the E1α subunit is located on the X chromosome and all proteins of the complex are nuclear encoded. Rapid regulation of the complex is regulated mainly by reversible phosphorylation of the E1α subunit [3] that is mediated by a family of PDC kinases (PDK) and phosphatases (PDP) [4,5].

Although over 40 years have elapsed since the first description of a congenital deficiency of the PDC [6], the incidence and prevalence of this life-threatening condition remain unknown. Several excellent earlier reviews exist of the clinical and biochemical characteristics or of the molecular genetic etiologies of PDC deficiency [2,7,9]. However, there has been no recent comprehensive analysis of the natural history of the disease, nor attempts to discern phenotypic differences or predictable outcomes based on biochemical defects or mutations in specific components of the complex. Here we summarize the clinical, biochemical and genetic findings contained in published

reports and personal experience of 371 individual cases of PDC deficiency. We sought associations among various pathological indices that could provide new insight into the pathobiology and clinical course of this disease.

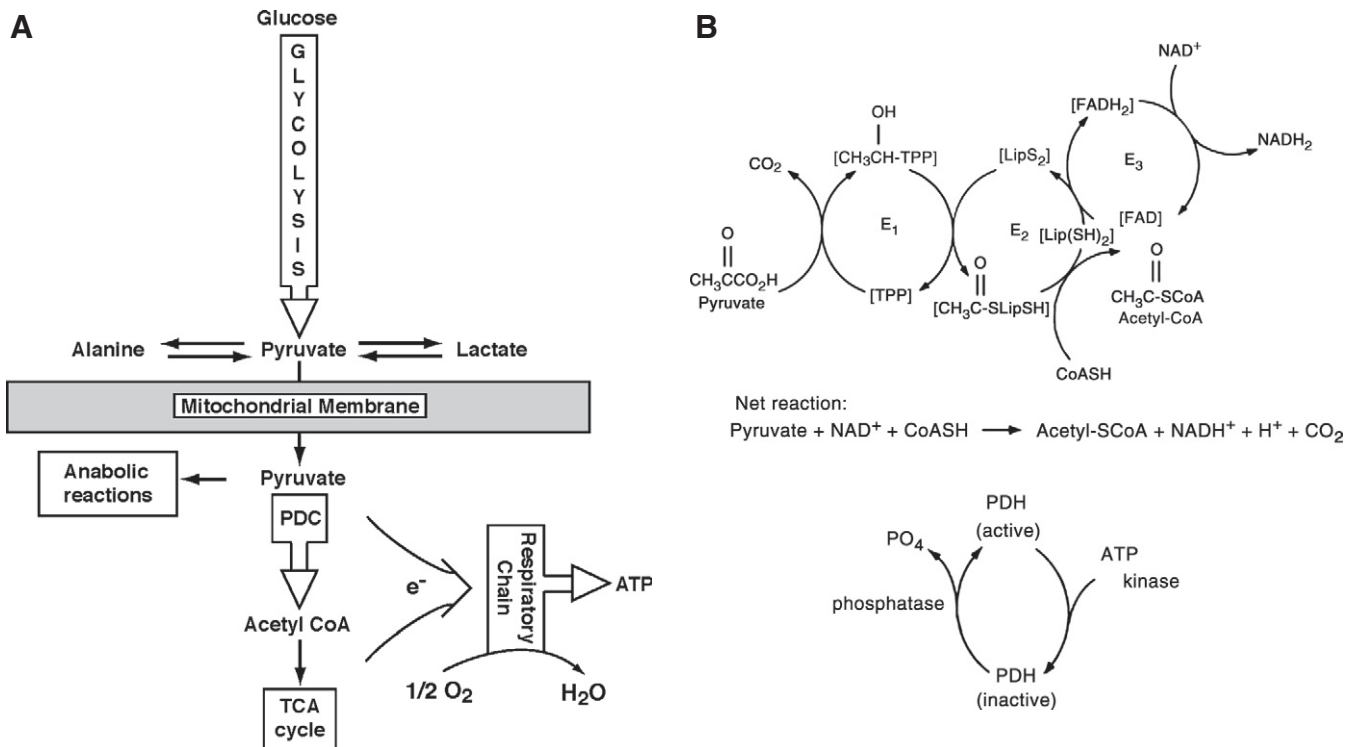
**2. Material and methods**

*2.1. Source material*

We reviewed all English language publications under “pyruvate dehydrogenase deficiency” and deficiency of each individual subunit and component of the complex listed in PubMed and Google Scholar from 1970 through December, 2010. Additional publications were found by reviewing the references included in articles not identified by the search engines. We also included information on a previously unpublished case of PDC E1α deficiency.

*2.2. Definition of PDC deficiency*

To be included a report had to provide a quantitative assessment of overall PDC activity and/or of the activities of its component parts. In most cases, PDC specific activity was determined by measuring the decarboxylation of 1-<sup>14</sup>C-pyruvate to <sup>14</sup>CO<sub>2</sub> and was expressed as a unit of <sup>14</sup>CO<sub>2</sub> production per tissue mass per unit of time. No case



**Fig. 1.** A. Central role of PDC in cellular energetics. B. PDC multi-enzyme complex. Abbreviations: TCA, tricarboxylic acid; e<sup>-</sup>, electrons; E1, pyruvate decarboxylase; E2, dihydrolipoamide transacetylase; E3, dihydrolipoamide dehydrogenase; TPP, thiamine pyrophosphate; Lip, lipoate (reduced and oxidized).

was included unless a “normal” control mean value or range of control values was given. For cases in which only the range of normal values was provided, we used the minimum value of the range. For cases in which the values for enzyme activity were listed for more than one cell type, the default choice was: fresh or frozen skeletal muscle, then primary cultures of skin fibroblasts, then freshly isolated lymphocytes or transformed lymphoblasts, then other tissues (e.g., liver). This order was adopted because skeletal muscle is highly dependent upon mitochondrial oxidative metabolism and is thus a target tissue in PDC deficiency and because a skin biopsy was the most common source of cells used in making the biochemical diagnosis. If serial measurements were made in different tissue specimens, we used the lowest reported value, applying the same default strategy described above. If a publication described a patient with a clinical presentation consistent with PDC deficiency (e.g., psychomotor retardation, hypotonia, neonatal lactic acidosis) who was found to have a pathological mutation in a subunit or component enzyme of the PDC or who had a first degree relative who possessed a pathological mutation involving the complex, we accepted the patient as having PDC deficiency, even without confirmation by standard enzymological criteria. Thus, the total number of PDC cases exceeds the number of cases in which a measureable enzymological defect was obtained.

### 2.3. Clinical features

Age of clinical disease onset was defined as the earliest reported clinical or biochemical sign or symptom consistent with a genetic mitochondrial disease. Quantification of intellectual, neuromuscular or peripheral nerve function or other clinical signs was seldom reported; therefore, we included them only as descriptive variables.

### 2.4. Metabolites

We combined data on whole blood, serum and plasma concentrations for lactate and pyruvate and chose the highest value reported for an individual case. We also used the highest reported values for cerebrospinal fluid (CSF) lactate and pyruvate. Circulating levels of alanine, which is in equilibrium with pyruvate and lactate (Fig. 1A), and other metabolites were frequently described as “elevated” but often were not quantified; consequently, we expressed the overall frequency of reported abnormalities in these molecules descriptively.

### 2.5. Neuroimaging

Findings derived from computerized tomography or magnetic resonance imaging of the brain, with or without the use of contrast material, were included in this category. “Leigh syndrome” (subacute necrotizing encephalomyopathy) was applied to cases in which patients had neuroimaging findings that included focal, bilaterally symmetric lesions in one or more parts of the basal ganglia, thalamus and brainstem.

### 2.6. Statistical analysis

Although this paper is mainly descriptive, we did conduct a number of comparisons. Qualitative associations were conducted by Fisher's Exact Test. Comparisons between two groups for quantitative measures were conducted by the Satterthwaite *t*-test, which corrects for unequal population standard deviations. Associations between quantitative variables were conducted by the Pearson's Correlation Coefficient. Readers are cautioned that, because a large number of statistical tests were conducted, some associations may be spurious.

## 3. Results

We found 159 full-length, peer-reviewed publications of 392 case reports of patients with PDC deficiency from the first reported case in 1970–2010. A few papers reported complimentary details of the same patient [6,24,32,38,40,41,45,47,49,66,69,75,77,80,83,84,96,97,103,105,112,114,129]. Twenty-one cases were omitted from our analysis, owing to lack of explicit enzymological or molecular genetic confirmation of disease [12–23]. Hence, this review summarizes the findings of 371 patients [1,24–169].

### 3.1. Clinical signs

Table 1 summarizes the most frequently reported clinical signs of PDC deficiency. We combined 211 cases in which patients were described as having “developmental delay”, “mental retardation” or “psychomotor retardation” because of the ambiguity of these terms and the considerable overlap in their application to patients. This category was the most frequently reported clinical sign and was present in 57% of cases. Hypotonia and/or hypertonia (169 cases) were the next most frequently reported signs; most of these patients were hypotonic, whereas hypertonia was reported in a few instances. Ataxia was reported in 72 patients and was more common in males ( $p=0.012$ ). Other frequently reported signs of motor dysfunction included spasticity, ptosis, and chorioathetoid movements. Reports of seizure activity frequently did not discriminate between focal and generalized convulsions, so this category includes both presentations. Microcephaly was usually reported without reference to a measured head circumference or in relation to a normative value. Respiratory distress typically occurred in the setting of acute acid–base decompensation and lactic acidemia, particularly in the neonatal period. Facial dysmorphism was reported to affect girls more frequently than boys and included such features as narrow head, frontal bossing, prominent philtrum and wide nasal bridge. Ocular manifestations of disease included optic atrophy, nystagmus and strabismus. The term “peripheral neuropathy” was used descriptively in most cases, even when formal nerve conduction testing was apparently undertaken during a patient's evaluation, and was reported more frequently in males ( $p=0.004$ ).

### 3.2. Biochemical features

Among all patients, 326 (89%) reports provided enzymological data and, in most cases, additional biochemical investigation that identified the affected subunit (Table 2). The mean  $\pm$  SD residual enzyme activity among cases was  $37.0 \pm 34.6\%$  of the normative data recorded in these reports. Most patients with PDC deficiency presented with clinical signs consistent with the disease (Table 1) before 1 year of age, regardless of the affected subunit or component. Seventy-six percent of patients had

**Table 1**  
Clinical signs associated with PDC deficiency.

Sign	No. cases (% of total)	Percent male
DD/MR/PMR	211 (57)	45
Hypotonia/hypertonia	169 (46)	51
Seizures	95 (26)	47
Microcephaly	83 (22)	23
Ataxia	72 (19)	78
Respiratory distress	51 (14)	59
Facial dysmorphism	44 (11)	34
Spasticity	38 (10)	34
Peripheral neuropathy	26 (7)	88
Optic atrophy	15 (4)	60
Nystagmus	11 (3)	64
Ptosis	9 (2.5)	89
Chorioathetoid movements	8 (2)	88
Strabismus	6 (1.6)	100

**Table 2**  
Enzymological classification and age of clinical presentation in PDC deficiency.

	Patients (%)	Males (%)	Consanguinity (%)	PDC Activity (% of nl)	Age of clinical onset (mos)
Total	371 (100)	52.1	6.8	37 ± 34.6	8.0 ± 15.8
E1	65 (17.5)	58.4	0	38.8 ± 25.9	7.3 ± 15.7
E1a	210 (56.6)	50.4	1	41.7 ± 39.2	8.9 ± 17.3
E1b	9 (2.4)	55.6	55.6	24.2 ± 22.2	3.1 ± 6.2
E2	4 (1.1)	50	66.7	48.5 ± 16	9.0 ± 8.6
E3	20 (5.1)	66.7	13.3	48.5 ± 21.2	5.9 ± 9.5
E3BP	23 (6.2)	60.8	60.8	18.1 ± 13.2	5 ± 10.2
Unclassified	40 (10.8)	46.9	0	42.3 ± 30.2	9.3 ± 16.6

Cases included as E1 deficiency were those in which a defect in the alpha or beta subunit was not described.

PDC deficiency due to a deficit in the  $\alpha$  subunit of E1. Males slightly outnumbered females and consanguinity accounted for about 7% of all cases. A majority of patients with a deficiency of E1 $\beta$  [132,152,158], E2 or E3BP [12,58,78,126,128,135,141,144] were products of consanguinity, in which the disease often occurred in more than one family member.

Table 3 summarizes the maximum reported lactate and pyruvate concentrations in blood and CSF and the blood lactate:pyruvate ratio. In some cases, only single values were reported; in others, serial blood levels were documented, although the time sequences varied greatly. Blood lactate was the most frequently reported value. The blood lactate:pyruvate ratio was calculated for those cases in which these measurements were obtained simultaneously. Virtually no temporal associations were described between measurements of blood and CSF chemistries; thus, we made no associations between blood and CSF lactate or pyruvate levels. These values were similar between genders and among the various biochemical diagnostic categories.

### 3.3. Neuroimaging findings

One hundred eighty-six patients had one or more imaging studies of the brain (Fig. 2). Seven subjects were reported to have normal imaging findings; all had E1 $\alpha$  deficiency [81,111,126,139,147,149,158]. Ventriculomegaly was the most frequent abnormality, affecting 65 patients (35%) in whom an abnormal brain imaging finding was reported. Leigh syndrome was described in 50 patients (27%); autopsy confirmation of this condition was reported very rarely. The basal ganglia, brain stem and cerebellum are anatomical areas frequently reported in association with Leigh syndrome and were identified as isolated abnormalities in some patients. Hypogenesis or agenesis of the corpus callosum was reported in 57 patients (31%) and in slightly over one-third of E1 $\alpha$  deficient individuals.

### 3.4. Molecular genetics

There were 237 cases (66%) that reported a mutation in a PDC component gene (Supplemental Table S1). Mutational data are listed chronologically and in relation to patient gender, residual PDC enzyme activity and age of clinical onset of disease. Missense mutations were more prevalent than frameshift mutations and occurred more often in

males; most females harbored frameshift mutations (Table 4). Although patients possessing missense mutations were most likely to present clinically later in life ( $7.73 \pm 11.37$  months vs.  $3.60 \pm 7.64$  months for frameshift mutations), there were no significant differences between these mutational classes in residual enzyme activity, maximum blood lactate concentration or survival at the time of case reporting. Not surprisingly, most mutations (84%) were located in the *PDHA1* gene. Among E1 $\alpha$  deficient individuals, most missense mutations localized to exons 1–9 (77%), whereas most frameshift mutations localized to exons 10 and 11 (86.5%). Associations among *PDHA1* missense mutations, the amino acid sequence of the E1 $\alpha$  subunit and residual PDC enzyme activities are described in the Supplemental Text and Supplemental Figs. 1–5.

### 3.5. Clinical Outcome

We examined the cross-sectional relationship between PDC deficiency, based on biochemical diagnosis, and survival (Fig. 3). There were 294 cases (79% of total) in which the age of the patient at death was reported or in which the patient was said to be alive at the time the case was described. Table 5 shows that 108 patients (36.6% of total) died at the time of reporting, with a mean age at death of  $2.70 \pm 4.66$  years. The remaining 187 patients were alive at the time of reporting, with a mean age of  $7.10 \pm 6.15$  years. There were 243 patients alive at 0.5 years of age, but only 10 patients were alive at age 20 years (Fig. 3). These statistics were closely matched by the data from the E1 and E1 $\alpha$  patient subgroups. The only other category in which similar results could be compared was the group of E3BP deficient subjects. However, as noted in Table 2, over 60% of these patients were from consanguineous relationships. Patients who died before case reporting were 8 months younger at the time of clinical presentation, compared to those who were alive at the time of reporting ( $2.9 \pm 6.56$  months vs.  $11.3 \pm 19.8$  months;  $p = 0.001$ ). Deceased patients also had higher maximum blood lactate concentrations ( $11.1 \pm 7.3$  mmol/L vs.  $6.2 \pm 3.8$  mmol/L;  $p < 0.001$ ) and lower residual PDC activity ( $26.6 \pm 23.6\%$  vs.  $37.7 \pm 33.4\%$ ;  $p < 0.002$ ). However, these three variables were only weakly correlated with each other (range of  $r$ : 0.235 to 0.281).

Because E1 $\alpha$  deficient patients represented the largest single subgroup in PDC deficiency, we undertook a similar cross-sectional comparison of age versus outcome in those E1 $\alpha$  deficient patients in whom a mutation in the *PDHA1* gene was identified (Fig. 4). Of 187 patients with *PDHA1* mutations, the most frequently reported were at amino acid positions 302 (15 cases), 263 (15 cases) and 378 (14 cases); 35 were missense mutations. Note that a mutation affecting amino acid position 378 may be particularly lethal. Of those individuals with a mutation affecting this position, seven were dead within the first two years of life. In contrast, patients with an amino acid substitution at either position 263 or 302 appeared to have a less truncated life span. Males accounted for 29 (83%) of these common mutations.

We next examined the effect of gender on the outcome of all cases with PDC deficiency or E1 $\alpha$  deficiency (Table 6). The proportion of males who died was greater than that of females in both groups. Unexpectedly, we also found that females who died presented earlier in

**Table 3**  
Blood and CSF lactate and pyruvate concentrations in patients with PDC deficiency.

	Blood lactate (mmol/L)	Blood pyruvate (mmol/L)	Blood L:P ratio	CSF lactate (mmol/L)	CSF pyruvate (mmol/L)
Total	7.8 ± 5.6 (201)	0.76 ± 2.3 (118)	19.6 ± 22 (45)	6.1 ± 3.04 (123)	0.47 ± 0.27 (43)
E1	9.9 ± 8.2 (16)	0.67 ± 0.99 (15)	18.6 ± 7.2 (5)	5.90 ± 4.5 (9)	0.57 ± 0.4 (4)
E1a	7.02 ± 5.8 (115)	0.56 ± 0.83 (66)	20.1 ± 25.6 (32)	6.07 ± 3 (74)	0.48 ± 0.27 (26)
E1b	11.8 ± 6.6 (8)		20.2 ± 0.28 (2)		
E2	2.58 ± 2.1 (3)	0.137 (1)		1.4 ± 0.39 (2)	
E3	11.3 ± 4.6 (15)	4.37 ± 8.6 (7)		3.01 ± 1.47 (4)	
E3BP	10.3 ± 6.9 (21)	0.56 ± 0.43 (10)	13.4 ± 4.7 (5)	6.03 ± 2.3 (6)	0.53 ± 0.06 (2)
Unclassified	6.0 ± 2.6 (38)	0.37 ± 0.19 (19)	17.6 (1)	6.9 ± 2.8 (28)	0.40 ± 0.26 (11)

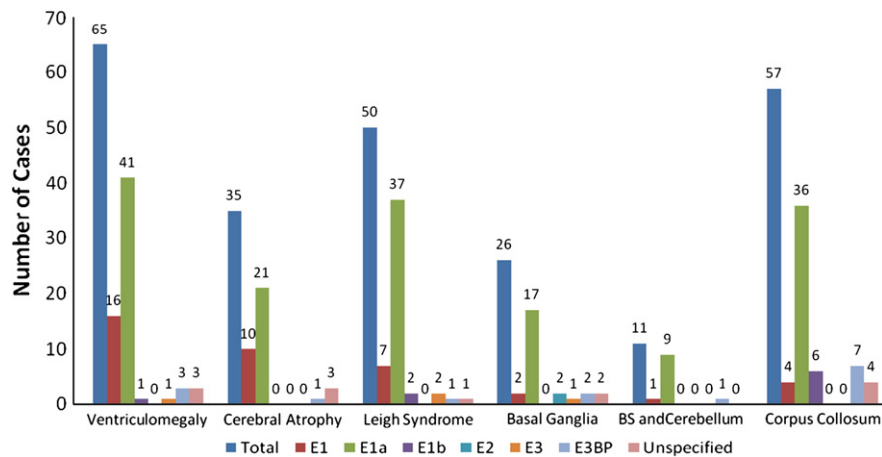


Fig. 2. Brain imaging findings in 186 patients with PDC deficiency. Abbreviation: BS, brain stem.

life and died at a younger age than males, yet had higher residual enzyme activity. The reason for this apparent discrepancy is unclear.

### 3.6. Other associations

We found no statistically significant associations between genders regarding the following variables: survival outcome at the time of case reporting; mental retardation/developmental delay/psychomotor retardation; hypotonia/hypertonia; microcephaly; facial dysmorphism; corpus callosum hypogenesis or agenesis; Leigh syndrome; basal ganglia involvement; or brainstem and cerebellar involvement. There was also no significant difference between the individual enzyme component deficiencies and the categories above and no significant association between corpus callosum agenesis or hypogenesis and Leigh syndrome, or between microcephaly and ventriculomegaly.

### 3.7. Treatment

Finally, we sought information relating to the clinical management of PDC deficiency. Alkali, usually as sodium bicarbonate, was administered often but sporadically, usually as a temporary treatment for acute acid–base decompensation. The most common interventions used chronically were thiamine (vitamin B1; 73 cases), a ketogenic diet, comprising at least 65% of total calories (19 cases), and dichloroacetate (DCA; 15 cases). Thiamine doses varied, from a few milligrams per day to doses exceeding 1 g/day. These latter cases typically involved patients in whom PDC deficiency was considered due to a mutation affecting the interaction of thiamine pyrophosphate with the E1 $\alpha$  subunit. The frequency with which ketogenic diets were employed may be underrepresented because many reports failed to specify the proportion of fat calories. Some patients received intravenous DCA for acute treatment of lactic acidosis but the majority of patients received DCA for chronic oral treatment at doses usually of 25 mg/kg/d or more. No intervention for PDC deficiency has been evaluated in a randomized controlled trial.

## 4. Discussion

PDC deficiency has been considered one of the most common biochemically proven causes of congenital lactic acidosis [2]. Our review of 371 cases of biochemically and/or genetically established PDC deficiency supports this notion. Regardless of which subunit or component of the complex is defective, most patients present within the first few months of life with both clinical and biochemical evidence of disease. The dominant presenting phenotype of PDC deficiency includes impairment of neurological and motor function; structural abnormalities of the brain, particularly ventriculomegaly, collosal dysgenesis and findings consistent with Leigh syndrome; hyperlactatemia; and a circulating lactate:pyruvate ratio  $\leq 20$ . Nevertheless, the clinical spectrum of PDC deficiency is broad, ranging from neonatal death with overwhelming lactic acidosis to a relatively benign course early in life with few overt signs.

Inhibition of PDC activity impairs the mitochondrial oxidation of pyruvate and promotes its cytoplasmic reduction to lactate or transamination to alanine. Diminished flux through the PDC also decreases the availability of acetyl CoA for the TCA cycle. In turn, reduction of both PDC and TCA cycle activities decreases the generation of reducing equivalents (as NADH and FADH<sub>2</sub>) that donate electrons to the respiratory chain to complete the process of oxidative phosphorylation. Consequently, potentially any congenital or acquired defect in any PDC component may give rise to lactic acidosis and to cellular energy failure, the latter most commonly expressed as progressive neurological and neuromuscular deterioration. Thus, it is not surprising that we found no clinical, neuroimaging or biochemical signs that distinguish patients with the most commonly reported E1 $\alpha$  deficiency from patients with defects in E1 $\beta$ , E2, E3 or the E3BP of the complex. In general, those who died were younger, had earlier clinical onset and had lower PDC activity.

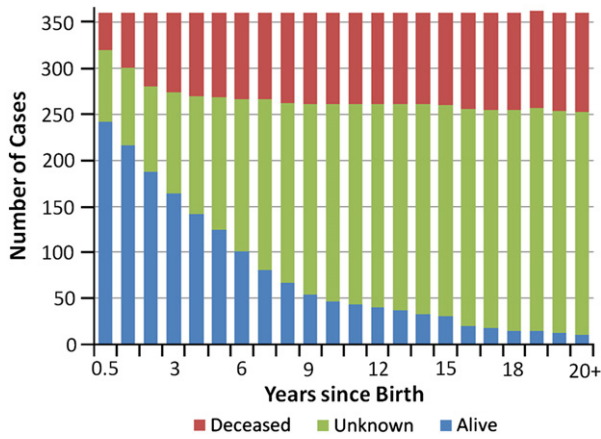
The natural history of PDC deficiency appears generally very similar between genders. However, boys may die proportionately more often than girls, yet at an older age, a phenomenon that may reflect the impact of lyonization of the *PDHA1* allele. Although significant gender differences were observed for ataxia and peripheral

**Table 4**  
Mutational classification in relation to various clinical indices.

Mutation	% Males	% Females	Enzyme activity	Age of clinical onset	Max. blood lactate	% Alive	% Deceased
Missense	62.7 (96)	36.3 (57)	37.8 $\pm$ 35.20 (142)	7.78 $\pm$ 12.90 (111)	7.81 $\pm$ 5.70 (95)	65.6 (86)	34.3 (45)
Frameshift	38.6 (27)	61.4 (43)	32.7 $\pm$ 29.30 (64)	3.60 $\pm$ 7.70 (47)	7.41 $\pm$ 4.20 (35)	63.5 (33)	36.5 (19)

Number of cases in parentheses.



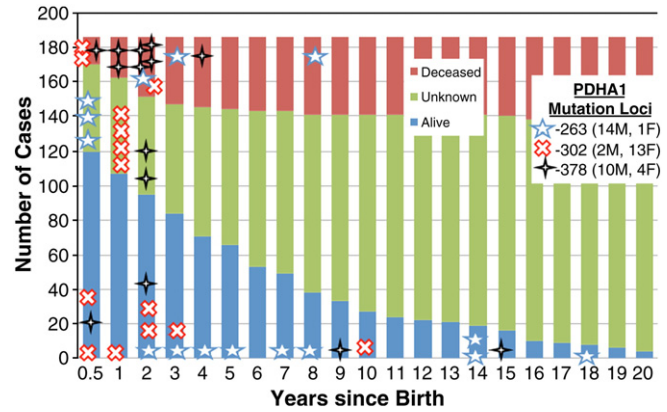


**Fig. 3.** Outcome of 371 patients with PDC deficiency. There were 294 patients in whom death or survival was documented at the time of reporting and 77 patients whose outcome was unknown at the time of reporting.

neuropathy, we caution against over interpreting these findings. Ataxia has been reported in response to carbohydrate feeding in a subset of males who exhibited an otherwise mild phenotype during the first 2 decades of life [11,111]. However, gross motor abnormalities occur in affected patients of both sexes (Table 1) and it is difficult to rationalize why one of these features should necessarily afflict one gender more than another. Electrical evidence of peripheral neuropathy, when sought, is a very common finding in patients with genetic mitochondrial diseases, including PDC deficiency [175–178], as would be expected for a tissue reliant mainly on oxidative metabolism for energy. Most of the published reports in our series that described the presence of peripheral neuropathy provided little or no objective documentation of sensory or motor nerve dysfunction and subtle abnormalities probably were either not sought or missed in many other patients. Thus, we tentatively conclude that the apparent gender discrepancy for this clinical sign is probably spurious and will not be confirmed by future studies in which formal peripheral nerve conduction testing is undertaken.

Facial dysmorphism is both an uncommon and curious finding in PDC deficiency, affecting only 11% of patients (mostly girls) in this review. Intriguing comparisons have been made between the dysmorphic features in PDC deficiency and fetal alcohol syndrome [reviewed in 2], given that the latter condition can potentially inhibit PDC activity and disrupt energy metabolism. However, it is likely that newborns with congenital PDC deficiency have suffered a degree of cellular energy failure at least as protracted and severe as children born to mothers who consume alcohol during pregnancy. Therefore, if PDC deficiency is the dominant biochemical mechanism underlying facial dysmorphism in both disorders, it is surprising that its prevalence is not higher in our series.

Structural brain lesions have long been noted as a common feature of PDC deficiency, but none of the findings reported here is unique to



**Fig. 4.** Outcome of 187 patients with PDC deficiency due to an identified biochemical and/or molecular genetic defect in E1α.

the disease. Moreover, their true frequencies are probably underestimated because only 186 (51%) of the cases contained evaluable neuroimaging details. In addition, given the high prevalence of ventricular enlargement in our series, it is probable that the true prevalence of cerebral atrophy is underreported.

Mosaicism in the *PDHA1* gene due to variability in the pattern of X chromosome inactivation may make it difficult to diagnose PDC deficiency in females [149] and a few cases of somatic mosaicism have also been reported in males [145,149,170]. Consequently, cells obtained by biopsy for enzymological diagnosis could falsely over-estimate global residual PDC activity in E1α deficient girls. It might be assumed that the amount of residual E1α activity measured in cells would correlate more closely with clinical phenotype in males who are heterozygous for a mutation than in females, in whom the biochemical expression of the defect depends on the degree of lyonization. However, as we and others [2] have found, there is generally a poor correlation between measured enzyme activity and clinical presentation and course, a conclusion applicable to PDC deficiency in general, regardless of the underlying component defect. This discrepancy between enzyme activity and the clinical phenotype of PDC deficiency is at least partly explained by both random X inactivation (in cases of E1α deficiency) and the dependency of the tissue used to diagnose the disease on PDC activity for supporting its energy needs.

*PDHA1* gene mutations have been subdivided broadly into 1) missense point mutations, with loss of PDC catalytic activity only; 2) deletions or exon skipping mutations, resulting in loss of E1α mRNA and protein; and 3) deletions, missense or nonsense mutations, resulting in loss of E1α protein without loss of E1α mRNA (unstable E1α) [10,174–180]. Despite the variable nature of these mutations, we found it difficult to draw sharp distinctions between specific mutations of the PDC and the natural history of the disease, although mutations affecting position 378 in *PDHA1* may be particularly lethal. As a whole, missense mutations occur more frequently in boys, whereas frameshift mutations are more

**Table 5**  
Outcome of 294 patients with PDC deficiency.

Subunit (no. cases)	Deceased			Alive		
	Percent	Mean age in years	Range in years	Percent	Mean age in years	Range in years
Total (294)	36.2 (108)	2.71 ± 4.53 (107)	0.1–35	63.8 (186)	7.1 ± 6.11 (167)	0–21
E1 (57)	42.1 (24)	0.98 ± 1.69 (24)	0–8	57.9 (33)	6.65 ± 5.17 (31)	0.1–22
E1a (163)	36.8 (60)	3.22 ± 5.22 (60)	0–21	63.2 (103)	7.5 ± 6.43 (92)	0.2–35
E1b (9)	44.4(4)	0.65 ± 0.48 (4)	0.1–1.1	55.5 (5)	9.14 ± 10.3 (5)	0.3–27
E2 (4)	0			100 (4)	7.5 ± 4.77 (3)	3.5–11
E3 (13)	50.0(9)	2.40 ± 2.16 (8)	0.3–5.5	50.0 (9)	4.01 ± 2.86 (8)	0.8–5
E3BP (22)	22.7 (5)	4.88 ± 6.67 (5)	0.1–16	77.2 (17)	7.8 ± 7.08 (17)	0.9–24
Unclassified (21)	28.6 (6)	4.5 ± 6.58 (6)	0–16	71.4 (15)	5.78 ± 4.72 (14)	0.8–15

**Table 6**  
Gender differences in clinical presentation and course.

Gender	Number deceased (%)	Age of onset (mos)	Age of death (years)	PDC activity (% nl)
Male	62(64)/37(64)	3.5/4.1	3.2/3.8	23.5/26.1
Female	38(36)/21(36)	1.1/0.9	2.1/2.4	32.7/41

Standard font represents total number of cases, while *italicized* text represents E1 $\alpha$  cases.

common in girls. However, this difference does not appear to be translated into biochemically or clinically meaningful differences.

Treatment of most patients with PDC deficiency has been disappointing and no intervention specific to this disease has been evaluated in a randomized controlled trial [178]. Nutritional mixtures of various cofactors and vitamins are commonly provided patients with PDC deficiency, usually, with limited biochemical rationale. In the majority of cases we reviewed, the doses of these modalities were omitted from the reports. Thiamine doses ranged from a few mg/d to >1 g/d. Thiamine pyrophosphate is an obligate cofactor for the E1 component of PDC, and most cases in which higher thiamine doses were administered involved cases in which a pathological mutation affecting the thiamine pyrophosphate binding site of E1 was assumed or established.

Patients with PDC deficiency do not oxidize carbohydrates efficiently; hence, the pyruvate derived from glycolysis is more likely to be reduced in the cytoplasm to lactate. This has led to the widespread use of high fat diets, typically with a caloric ratio of 3–4 fats to 1 carbohydrate plus protein, which induce ketosis and provide an alternative source of acetyl CoA, particularly for the nervous system. Reports of a few children with PDC deficiency whose clinical course improved dramatically while following a high fat diet are consistent with this postulate and have resulted in the incorporation of such diets in the routine care of many patients with PDC deficiency [25,111,180]. However, most of the reports reviewed here described the administration of a “ketogenic,” “high fat” or “low carbohydrate” diet without providing information on the caloric distribution of metabolizable fuels. Therefore, we included under the category of ketogenic diet only those cases in which fat comprised at least 65% of total calories. No controlled trials have prospectively evaluated any type of “ketogenic diet” in the treatment of PDC deficiency.

DCA increases PDC activity by inhibiting the activity of PDKs in virtually all tissues, thereby maintaining E1 $\alpha$  in its phosphorylated, catalytically active, state [181] and by stabilizing the complex and decreasing its rate of turnover [182]. When DCA was administered to PDC deficient patients, doses frequently varied over time in a given patient and, among subjects, in duration of treatment. The drug has been evaluated in randomized controlled trials in patients with various genetic mitochondrial diseases [183–185] in which a few children with PDC deficiency participated. These and other open label reports [10] have suggested that chronic DCA may benefit patients with PDC deficiency.

## 5. Conclusions

In summary, our analysis of 371 cases of proven PDC deficiency found that neither gender nor any biochemical or clinical feature differentiates the various enzymological or molecular genetic etiologies of the disease. The clinical spectrum of PDC deficiency is broad, but typically presents in early childhood with neurodevelopmental and neuromuscular compromise. Hyperlactatemia is a frequent, but not universal, finding early in the disease process, is associated with a blood lactate:pyruvate ratio  $\leq 20$  and often portends an early demise when present during the neonatal period. Boys and girls may differ in a few clinical characteristics and in the type of PDC mutation they harbor, but otherwise share a fairly common clinical course. Although

many cases in our series described the administration of thiamine, a ketogenic diet and DCA, singly or in combination, such uncontrolled studies involving one or a few subjects provide no new insight into the potential safety and efficacy of these interventions. Rigorous, prospective evaluation of promising therapies is needed for PDC deficiency. Such controlled trials should incorporate a standardized approach to the longitudinal study of the natural history of this devastating disease.

Supplementary materials related to this article can be found online at doi:10.1016/j.ymgme.2011.09.032.

## Acknowledgments

This work was supported by NIH grants R34HD065991-01, UL1RR025208 and U54RR025208-01 and by the University of Florida's Clinical and Translational Science Institute. We thank Ms. Kathryn St. Croix for editorial assistance.

## References

- [1] L.J. Reed, Multienzyme complexes, *Acc. Chem. Res.* 7 (1974) 40–46.
- [2] B.H. Robinson, Lactic acidemia (disorders of pyruvate carboxylase, pyruvate dehydrogenase), in: C.R. Scriver, A.L. Beaudet, W.S. Sly, D. Valle (Eds.), *The Metabolic and Molecular Bases of Inherited Disease*, McGraw-Hill, New York, 1995, pp. 1479–1499.
- [3] S. Whitehouse, R.H. Cooper, P.J. Randle, Mechanism of activation of pyruvate dehydrogenase by dichloroacetate and other halogenated carboxylic acids, *Biochem. J.* 141 (1974) 761–774.
- [4] D.R. Pagliarini, J.E. Dixon, Mitochondrial modulation: reversible phosphorylation takes center stage? *Trends Biochem. Sci.* 31 (2006) 26–34.
- [5] T.E. Roche, Y. Hiromasa, Pyruvate dehydrogenase kinase regulatory mechanisms and inhibition in treating diabetes, heart ischemia, and cancer, *Cell. Mol. Life Sci.* 64 (2007) 830–849.
- [6] J.P. Blass, J. Avigan, B.W. Uhlendorf, A defect in pyruvate decarboxylase deficiency in a child with an intermittent movement disorder, *J. Clin. Invest.* 49 (1970) 423–432.
- [7] D.S. Kerr, C. Schmotzer, Variability of human pyruvate dehydrogenase complex deficiency, in: M.S. Patel, F. Jordan (Eds.), *Thiamine: Catalytic Mechanisms and Role in Normal and Disease States*, Marcel Dekker Inc, New York, 2004, pp. 471–483.
- [8] S.D. DeBrosse, K. Okajima, C.L. Schmotzer, M.B. Frohnapfel, D.S. Kerr, Spectrum of Clinical Outcomes in Pyruvate Dehydrogenase Deficiency, United Mitochondrial Disease Foundation Annual Symposium June 15–19, 2011, Chicago, IL.
- [9] P.W. Stacpoole, L.R. Gilbert, Pyruvate dehydrogenase complex deficiency, in: R. H. Glew, M.D. Rosenthal (Eds.), *Clinical Cases in Medical Biochemistry*, Oxford University Press, New York, 2006, pp. 77–88.
- [10] K. Berendzen, D.S. Thieriaque, J. Shuster, P.W. Stacpoole, Therapeutic potential of dichloroacetate for pyruvate dehydrogenase complex deficiency, *Mitochondrion* 6 (2006) 126–135.
- [11] I.R. Livingstone, D. Gardner-Medwin, R.J.T. Pennington, Familial intermittent ataxia with possible X-linked recessive inheritance, *J. Neurol. Sci.* 64 (1984) 89–97.
- [12] D.G. Ramadan, R.A. Head, A. Al-Tawari, Y. Habeeb, M. Zaki, F. Al-Ruqum, et al., Lactic acidosis and developmental delay due to deficiency of E3 binding protein (protein X) of the pyruvate dehydrogenase complex, *J. Inher. Metab. Dis.* 27 (2004) 477–485.
- [13] R. Brown, R.A. Head, G. Brown, Pyruvate dehydrogenase E3 binding protein deficiency, *Hum. Genet.* 110 (2002) 187–191.
- [14] E. Naito, M. Ito, I. Yokota, T. Saijo, J. Matsuda, Y. Kuroda, Thiamine-responsive lactic acidemia: role of pyruvate dehydrogenase complex, *Eur. J. Pediatr.* 157 (1998) 648–652.
- [15] Y. Arai, Y. Miyasato, H. Koide, Characteristic changes on brain CT in a case of Leigh encephalopathy with deficiency of pyruvate dehydrogenase, *Brain Dev.* 13 (1991) 457–458.
- [16] L. Medina, T.L. Chi, D.C. DeVivo, S.K. Hilal, MR findings in patients with subacute necrotizing encephalomyelopathy (Leigh syndrome): correlation with the biochemical defect, *Am. J. Neuroradiol.* 11 (1990) 379–384.
- [17] C.W. Chow, R.M. Anderson, G.C. Kenny, Neuropathology in cerebral lactic acidosis, *Acta Neuropathol.* 74 (1987) 393–396.
- [18] S.D. Cederbaum, J.P. Blass, N. Minkoff, W.J. Brown, M.E. Cotton, S.H. Harris, Sensitivity to carbohydrate in a patient with familial intermittent lactic acidosis and pyruvate dehydrogenase deficiency, *Pediatr. Res.* 10 (1976) 713–720.
- [19] J.C. Haworth, T.L. Perry, J.P. Blass, S. Hansen, N. Urquhart, Lactic acidosis in three sibs due to defects in both pyruvate dehydrogenase and alpha-ketoglutarate dehydrogenase complexes, *Pediatrics* 58 (1976) 564–572.
- [20] J.H. Stromme, O. Borud, P.J. Moe, Fatal lactic acidosis in a newborn attributable to a congenital defect of pyruvate dehydrogenase, *Pediatr. Res.* 10 (1976) 62–66.
- [21] J.P. Blass, A.P. Kark, W.K. Engel, Clinical studies of a patient with pyruvate decarboxylase deficiency, *Arch. Neurol.* 25 (1971) 449–460.

- [22] D.F. Farrell, A.F. Clark, C.R. Scott, R.P. Wennberg, Absence of pyruvate decarboxylase activity in man: a cause of congenital lactic acidosis, *Science* 187 (1975) 1082–1084.
- [23] R.E. Falk, S.D. Cederbaum, J.P. Blass, G.E. Gibson, R.A. Kark, R.E. Carrel, Ketonic diet in the management of pyruvate dehydrogenase deficiency, *Pediatrics* 58 (1976) 713–721.
- [24] B. Robinson, J. Taylor, W. Sherwood, Deficiency of dihydrolipoyl dehydrogenase (a component of the pyruvate and alpha ketoglutarate dehydrogenase complex): a cause of congenital chronic lactic acidosis in infancy, *Pediatrics* 11 (1977) 1198–1202.
- [25] H. Wick, K. Schweizer, R. Baumgartner, Thiamine dependency in a patient with congenital lactic acidemia due to pyruvate dehydrogenase deficiency, *Agents Actions* 7 (1977) 405–410.
- [26] D.C. DeVivo, M.W. Haymond, K.A. Obert, J.S. Nelson, A.S. Pagliara, Defective activation of the pyruvate dehydrogenase complex in subacute necrotizing encephalomyelopathy, *Ann. Neurol.* 6 (1979) 483–494.
- [27] B.H. Robinson, J. Taylor, S.G. Kahler, H.N. Kirkman, Lactic acidemia, neurologic deterioration and carbohydrate dependence in a girl with dihydrolipoyl dehydrogenase deficiency, *Eur. J. Pediatr.* 136 (1981) 35–39.
- [28] M. Prick, F. Gabreels, W. Renier, F. Trijbels, H. Jaspas, K. Lamers, J. Kok, Pyruvate dehydrogenase deficiency restricted to brain, *Neurology* 31 (1981) 398–404.
- [29] G. Uziel, E. Bottacchi, G. Moschen, P. Giovanardi-Rossi, G. Cardace, S. Di Donato, Pyruvate-dehydrogenase complex in ataxic patients: enzyme deficiency in ataxic encephalopathy plus lactic acidosis and normal activity in Friedreich ataxia, *Ital. J. Neurol. Sci.* 3 (1982) 317–321.
- [30] M. Ohtake, G. Takada, S. Miyabayashi, N. Arai, K. Tada, S. Morinaga, Pyruvate decarboxylase deficiency in a patient with Leigh's encephalomyelopathy, *Tohoku J. Exp. Med.* 137 (1982) 379–386.
- [31] T.L. Hansen, E. Christensen, N.J. Brandt, Studies on pyruvate carboxylase, pyruvate decarboxylase and lipamide dehydrogenase in subacute necrotizing encephalomyelopathy, *Acta Paediatr. Scand.* 71 (1982) 263–267.
- [32] S. Kodama, R. Yagi, M. Ninomiya, K. Goji, T. Takahashi, Y. Morishita, T. Matsuo, The effect of a high fat diet on pyruvate decarboxylase deficiency without central nervous system involvement, *Brain Dev.* 5 (1983) 381–389.
- [33] S.F. Dierdorf, W.L. McNiece, Anaesthesia and pyruvate dehydrogenase deficiency, *Can. Anaesth. Soc. J.* 30 (1983) 413–416.
- [34] T. Kuhara, T. Shinka, Y. Inoue, M. Matsumoto, M. Yoshino, Y. Sakaguchi, I. Matsumoto, Studies of urinary organic acid profiles of a patient with dihydrolipoyl dehydrogenase deficiency, *Clin. Chim. Acta.* 133 (1983) 133–140.
- [35] O.B. Evans, Episodic weakness in pyruvate decarboxylase deficiency, *J. Pediatr.* 105 (1984) 961–963.
- [36] S. Matuda, A. Kitano, Y. Sakaguchi, M. Yoshino, T. Saheki, Pyruvate dehydrogenase subcomplex with lipamide dehydrogenase deficiency in a patient with lactic acidosis and branched chain ketoaciduria, *Clin. Chim. Acta.* 140 (1984) 59–64.
- [37] K. Johnston, C.J. Newth, K.F. Sheu, M.S. Patel, G.P. Heldt, K.A. Schmidt, S. Packman, Central hypoventilation syndrome in pyruvate dehydrogenase complex deficiency, *Pediatrics* 74 (1984) 1034–1040.
- [38] R. Matalon, D.A. Stumpf, K. Michals, R.D. Hart, J.K. Parks, S.I. Goodman, Lipamide dehydrogenase deficiency with primary lactic acidosis: favorable response to treatment with oral lipoic acid, *J. Pediatr.* 104 (1984) 65–69.
- [39] M. Matsuo, K. Ookita, H. Takemine, K. Koike, M. Koike, Fatal case of pyruvate dehydrogenase deficiency, *Acta Paediatr. Scand.* 74 (1985) 140–142.
- [40] K. McCormick, R.M. Viscardi, B. Robinson, J. Heininger, Partial pyruvate decarboxylase deficiency with profound lactic acidosis and hyperammonemia: responses to dichloroacetate and benzoate, *Am. J. Med. Genet.* 22 (1985) 291–299.
- [41] L. Ho, C.W. Hu, S. Packman, M.S. Patel, Deficiency of the pyruvate dehydrogenase component in pyruvate dehydrogenase complex-deficient human fibroblasts, *J. Clin. Invest.* 78 (1986) 844–847.
- [42] N. McKay, R. Petrova-Benedict, J. Thoene, B. Bergen, W. Wilson, B. Robinson, Lactic acidemia due to pyruvate dehydrogenase deficiency, with evidence of protein polymorphism in the  $\alpha$ -subunit of the enzyme, *Eur. J. Pediatr.* 144 (1986) 445–450.
- [43] C. Wicking, R. Scholem, S. Hunt, G. Brown, Immunochemical analysis of new and mutant forms of human pyruvate dehydrogenase, *J. Biochem.* 239 (1986) 89–96.
- [44] S.J. Chung, S. Asoh, T. Yamanaka, Y. Okamura-Oho, K. Tushima, M. Woo, I. Nonaka, Muscle involvement in pyruvate dehydrogenase complex (PDHC) deficiency, *Brain Dev.* 9 (1987) 9–15.
- [45] G.K. Brown, R.D. Scholem, S.M. Hunt, J.R. Harrison, A.C. Pollard, Hyperammonaemia and lactic acidosis in a patient with pyruvate dehydrogenase deficiency, *J. Inher. Metab. Dis.* 10 (1987) 359–366.
- [46] H.A. Kretzschmar, S.J. Dearmond, T.K. Koch, M.S. Patel, C.J. Newth, K.A. Schmidt, S. Packman, Pyruvate dehydrogenase complex deficiency as a cause of subacute necrotizing encephalopathy (Leigh disease), *Pediatrics* 79 (1987) 370–373.
- [47] B.H. Robinson, H. MacMillan, R. Petrova-Benedict, W.G. Sherwood, Variable clinical presentation in patients with defective E1 component of pyruvate dehydrogenase complex, *J. Pediatr.* 111 (1987) 525–533.
- [48] G.K. Brown, E.A. Haan, D.M. Kirby, R.D. Scholem, J.E. Wraith, J.G. Rogers, D.M. Danks, "Cerebral" lactic acidosis: defects in pyruvate metabolism with profound brain damage and minimal systemic acidosis, *Eur. J. Pediatr.* 147 (1988) 10–14.
- [49] M.A. Birch-Machin, I.M. Shepherd, M. Solomon, S.J. Yeaman, D. Gardner-Medwin, H.S. Sherratt, J.G. Lindsay, A. Aynsley-Green, D.M. Turnbull, Fatal lactic acidosis due to deficiency of E1 component of the pyruvate dehydrogenase complex, *J. Inher. Metab. Dis.* 11 (1988) 207–217.
- [50] D.S. Kerr, S.A. Berry, M.M. Lusk, L. Ho, M. Patel, A deficiency of both subunits of pyruvate dehydrogenase which is not expressed in fibroblasts, *Pediatr. Res.* 24 (1988) 95–100.
- [51] D.J. Byrd, H.P. Krohn, L. Winkler, C. Steinborn, M. Hadam, J. Brodehl, D.H. Hunneman, Neonatal pyruvate dehydrogenase deficiency with lipoate responsive lactic acidemia and hyperammonemia, *Eur. J. Pediatr.* 148 (1989) 543–547.
- [52] A. Kitano, F. Endo, Y. Kuroda, S. Aso, T. Kawasaki, I. Matsuda, Biochemical nature of pyruvate dehydrogenase complex in the patient with primary lactic acidemia, *J. Inher. Metab. Dis.* 12 (1989) 379–385.
- [53] A. Kitano, F. Endo, I. Matsuda, S. Miyabayashi, H.H. Dahl, Mutation of the E1 alpha subunit of the pyruvate dehydrogenase complex, in relation to heterogeneity, *J. Inher. Metab. Dis.* 12 (1989) 97–107.
- [54] S.E. Old, D.C. DeVivo, Pyruvate dehydrogenase complex deficiency: biochemical and immunoblot analysis of cultured skin fibroblasts, *Ann. Neurol.* 26 (1989) 746–751.
- [55] H. Endo, K. Hasegawa, K. Narisawa, K. Tada, Y. Kagawa, S. Ohta, Defective gene in lactic acidosis: abnormal pyruvate dehydrogenase E1-subunit caused by a frame shift, *Am. J. Hum. Genet.* 44 (1989) 358–364.
- [56] A. Kitano, F. Endo, I. Matsuda, Immunochemical analysis of pyruvate dehydrogenase complex in 2 boys with primary lactic acidemia, *Neurology* 40 (1990) 1312–1314.
- [57] W. Sperl, W. Ruitenbeek, C.M.C. Kerkhof, R.C.A. Sengers, J.M.F. Trijbels, J.P. Guggenbichler, A.J.M. Janssen, J.A.J.M. Bakkeren, *Eur. J. Pediatr.* 149 (1990) 487–492.
- [58] B.H. Robinson, N. MacKay, R. Petrova-Benedict, I. Ozalp, T. Coskun, P.W. Stacpoole, Defects in the E2 lipoyl transacetylase and the X-lipoyl containing component of the pyruvate dehydrogenase complex in patients with lactic acidemia, *J. Clin. Invest.* 85 (1990) 1821–1824.
- [59] A. Federico, M.T. Dotti, G.M. Fabrizi, S. Palmeri, L. Massimo, B.H. Robinson, A. Malandrini, G.C. Guazzi, Congenital lactic acidosis due to a deficiency of pyruvate dehydrogenase complex (E1), *Eur. Neurol.* 30 (1990) 123–127.
- [60] H.H.M. Dahl, C. Maragos, R.M. Brown, L.L. Hansen, G.K. Brown, Pyruvate dehydrogenase deficiency caused by deletion of a 7-bp repeat sequence in the E1 gene, *Am. J. Hum. Genet.* 47 (1990) 286–293.
- [61] L.J. de Meirleir, W. Lissens, E. Vamos, I. Liebaers, Pyruvate dehydrogenase deficiency due to a mutation of the E1 alpha subunit, *J. Inher. Metab. Dis.* 14 (1991) 301–304.
- [62] A.H.M. Mahbulul Huq, M. Ito, E. Naito, T. Saijo, E. Takeda, Y. Kuroda, Demonstration of an unstable variant of pyruvate dehydrogenase protein (E1) in cultured fibroblasts from a patient with congenital lactic acidosis, *Pediatr. Res.* 30 (1991) 11–14.
- [63] H. Endo, S. Miyabayashi, K. Tada, K. Narisawa, A four nucleotide insertion at the E1a gene in a patient with pyruvate dehydrogenase deficiency, *J. Inher. Metab. Dis.* 14 (1991) 793–799.
- [64] K. Chun, N. MacKay, R. Petrova-Benedict, B.H. Robinson, Pyruvate dehydrogenase deficiency due to a 20-bp deletion in exon II of the pyruvate dehydrogenase (PDH) E1 alpha gene, *Am. J. Hum. Genet.* 49 (1991) 414–420.
- [65] L. Hansen, G.K. Brown, D.M. Kirby, H.H.M. Dahl, Characterization of the mutation of three patients with pyruvate dehydrogenase E1 $\alpha$  deficiency, *J. Inher. Metab. Dis.* 14 (1991) 140–151.
- [66] K. Narisawa, H. Endo, S. Miyabayashi, K. Tada, Thiamine Responsive Pyruvate Dehydrogenase Deficiency, *J. Nutr. Sci. Vitaminol. (Tokyo)* (1992) Spec No:585–8.
- [67] L. De Meirleir, W. Lissens, E. Vamos, I. Liebaers, Pyruvate dehydrogenase (PDH) deficiency caused by a 21-base pair insertion mutation in the E1 $\alpha$  subunit, *Hum. Genet.* 88 (1992) 649–652.
- [68] F.A. Wijburg, P.G. Barth, L.A. Bindoff, M.A. Birch-Machin, J.F. van der Blij, W. Ruitenbeek, D.M. Turnbull, R.B. Schutgens, Leigh syndrome associated with a deficiency of the pyruvate dehydrogenase complex: results of treatment with a ketogenic diet, *Neuropediatrics* 23 (1992) 147–152.
- [69] H.H.M. Dahl, L.L. Hansen, R.M. Brown, D.M. Danks, J.G. Rogers, G.K. Brown, X-linked pyruvate dehydrogenase subunit deficiency in heterozygous females: variable manifestation of the same mutation, *J. Inher. Metab. Dis.* 15 (1992) 835–847.
- [70] M. Ito, A.H. Huq, E. Naito, T. Saijo, E. Takeda, Y. Kuroda, Mutation of the E1a gene in a female patient with pyruvate dehydrogenase deficiency due to rapid degradation of E1 protein, *J. Inher. Metab. Dis.* 15 (1992) 848–856.
- [71] L.L. Hansen, G.K. Brown, R.M. Brown, H.H. Dahl, Pyruvate dehydrogenase deficiency caused by a 5 base pair duplication in the E1 alpha subunit, *Hum. Mol. Genet.* 2 (1993) 805–807.
- [72] H. Hansikova, J. Zeman, et al., Deficiency of pyruvate dehydrogenase complex in tissues of an eight month old infant, *Biochem. Mol. Biol. Int.* 31 (1993) 1157–1166.
- [73] A. Michotte, L. De Meirleir, W. Lissens, R. Denis, J.L. Wayenberg, I. Liebaers, J.M. Brucher, Neuropathological findings of a patient with pyruvate dehydrogenase E1 $\alpha$  deficiency presenting as a cerebral lactic acidosis, *Acta Neuropathol.* 85 (1993) 674–678.
- [74] L. DeMeirleir, W. Lissens, R. Denis, J.L. Wayenberg, A. Michotte, J.M. Brucher, E. Vamos, E. Gerlo, I. Liebaers, Pyruvate dehydrogenase deficiency: clinical and biochemical diagnosis, *Pediatr. Neurol.* 9 (1993) 216–220.
- [75] K. Chun, N. MacKay, R. Petrova-Benedict, B.H. Robinson, Mutations in the X-linked E1 alpha subunit of pyruvate dehydrogenase leading to deficiency of the pyruvate dehydrogenase complex, *Hum. Mol. Genet.* 2 (1993) 449–454.
- [76] A. Iso, N. Murakami, H. Yoneyama, S. Hanaoka, T. Kurokawa, I. Nonaka, Idiopathic lactic acidemia with developmental delay and type I muscle fiber atrophy: report of two patients, *Brain Dev.* 15 (1993) 384–386.
- [77] F. Takakubo, D.R. Thorburn, H.H.M. Dahl, A four-nucleotide insertion hotspot in the X chromosome located pyruvate dehydrogenase E1 $\alpha$  gene (PDHA1), *Hum. Mol. Genet.* 2 (1993) 473–474.
- [78] C. Marsac, D. Stansbie, G. Bonne, J. Cousin, P. Jehenson, C. Benelli, J.P. Leroux, G. Lindsay, Defect in the lipoyl bearing protein X subunit of the pyruvate dehydrogenase complex in two patients with encephalomyelopathy, *J. Pediatr.* 123 (1993) 915–920.



- [79] P.P. Tóth, H. el-Shanti, S. Evins, W.J. Rhead, J.M. Klein, Transient improvement of congenital lactic acidosis in a male infant with pyruvate decarboxylate deficiency treated with dichloroacetate, *J. Pediatr.* 123 (1993) 427–430.
- [80] G. Bonne, C. Benelli, L. De Meirleir, W. Lissens, M. Chausssain, M. Diry, J.P. Clot, G. Ponsot, V. Geoffroy, J.P. Leroux, et al., E1 pyruvate dehydrogenase deficiency in a child with motor neuropathy, *Pediatr. Res.* 33 (1993) 284–288.
- [81] H.H. Dahl, G.K. Brown, Pyruvate dehydrogenase deficiency in a male caused by a point mutation (F205L) in the E1 alpha subunit, *Hum. Mutat.* 3 (1994) 152–155.
- [82] J.H. Cross, A. Connelly, D.G. Gadian, B.E. Kendall, G.K. Brown, R.M. Brown, J.V. Leonard, Clinical diversity of pyruvate dehydrogenase deficiency, *Pediatr. Neurol.* 10 (1994) 276–283.
- [83] E. Naito, M. Ito, I. Yokota, J. Matsuda, A. Yara, Y. Kuroda, Pyruvate dehydrogenase deficiency caused by a four-nucleotide insertion in the E1 $\alpha$  subunit gene, *Hum. Mol. Genet.* 3 (1994) 1193–1194.
- [84] P.M. Matthews, R.M. Brown, L.J. Otero, D.R. Marchington, M. LeGris, R. Howes, L.S. Meadows, M. Shevell, C.R. Scriver, G.K. Brown, Pyruvate dehydrogenase deficiency. Clinical presentation and molecular genetic characterization of five new patients, *Brain* 117 (1994) 435–443.
- [85] E. Naito, M. Ito, E. Takeda, I. Yokota, S. Yoshijima, Y. Kuroda, Molecular analysis of abnormal pyruvate dehydrogenase in a patient with thiamine-responsive lactic acidemia, *Pediatr. Res.* 36 (1994) 340–346.
- [86] H. Awata, F. Endo, A. Tanoue, A. Kitano, I. Matsuda, Characterization of a point mutation in the pyruvate dehydrogenase E1 alpha gene from two boys with primary lactic acidemia, *J. Inher. Metab. Dis.* 17 (1994) 189–195.
- [87] B. Chabrol, J. Mancini, C. Benelli, C. Gire, A. Munnich, Leigh syndrome: pyruvate dehydrogenase defect. A case with peripheral neuropathy, *J. Child Neurol.* 9 (1994) 52–55.
- [88] F. Takakubo, D.R. Thorburn, R.M. Brown, G.K. Brown, H.H. Dahl, A novel mutation (P316L) in a female with pyruvate dehydrogenase E1 $\alpha$  deficiency, *Hum. Mutat.* 6 (1995) 274–275.
- [89] W. Lissens, I. Desguerre, C. Benelli, C. Marsac, F. Fouque, C. Haenggeli, G. Ponsot, S. Seneca, I. Liebaers, L. De Meirleir, Pyruvate dehydrogenase deficiency in a female due to a 4 base pair deletion in exon 10 of the E1 $\alpha$  gene, *Hum. Mol. Genet.* 4 (1995) 307–308.
- [90] L.J. Otero, G.K. Brown, K. Silver, D.L. Arnold, P.M. Mathews, Association of cerebral dysgenesis and lactic acidemia with X-linked PDH E1  $\alpha$  subunit mutations in females, *Pediatr. Neurol.* 13 (1995) 327–332.
- [91] K. Chun, N. MacKay, R. Petrova-Benedict, A. Federico, A. Fois, D.E. Cole, E. Robertson, B.H. Robinson, Mutations in the X-linked E1 alpha subunit of pyruvate dehydrogenase: exon skipping, insertion of duplicate sequence, and missense mutations leading to the deficiency of the pyruvate dehydrogenase complex, *Am. J. Hum. Genet.* 56 (1995) 558–569.
- [92] S.G. Hemalatha, D.S. Kerr, I.D. Wexler, M.M. Lusk, M. Kaung, Y. Du, M. Kolli, R.L. Schelper, M.S. Patel, Pyruvate dehydrogenase complex deficiency due to a point mutation (P188L) within the thiamine pyrophosphate binding loop of the E1 alpha subunit, *Hum. Mol. Genet.* 4 (1995) 315–318.
- [93] O.N. Elpeleg, W. Ruitenbeek, C. Jakobs, V. Barash, D.C. De Vivo, N. Amir, Congenital lactic acidemia caused by lipoamide dehydrogenase deficiency with favorable outcome, *J. Pediatr.* 126 (1995) 72–74.
- [94] J. Matsuda, M. Ito, E. Naito, I. Yokota, Y. Kuroda, DNA diagnosis of pyruvate dehydrogenase deficiency in female patients with congenital lactic acidemia, *J. Inher. Metab. Dis.* 18 (1995) 534–546.
- [95] F. Takakubo, P. Cartwright, N. Hoogenraad, D.R. Thorburn, F. Collins, T. Lithgow, H.H.M. Dahl, An amino acid substitution in the pyruvate dehydrogenase E1 gene, affecting mitochondrial import of the precursor protein, *Am. J. Hum. Genet.* 57 (1995) 772–780.
- [96] P. Briones, M.J. Lopez, L. DeMeirleir, A. Ribes, M. Rodés, C. Martinez-Costa, M. Peris, W. Lissens, Leigh syndrome due to pyruvate dehydrogenase E1 $\alpha$  deficiency (point mutation R263G) in a Spanish boy, *J. Inher. Metab. Dis.* 19 (1996) 795–796.
- [97] O. Pastoris, S. Savasta, P. Foppa, M. Catapano, M. Dossena, Pyruvate dehydrogenase deficiency in a child responsive to thiamine treatment, *Acta Paediatr.* 85 (1996) 625–628.
- [98] W. Lissens, L. De Meirleir, S. Seneca, C. Benelli, C. Marsac, B.T. Poll-The, P. Briones, W. Ruitenbeek, O. van Diggelen, D. Chaigne, V. Ramaekers, I. Liebaers, Mutation analysis of the pyruvate dehydrogenase E1 $\alpha$  gene in eight patients with a pyruvate dehydrogenase complex deficiency, *Hum. Mutat.* 7 (1996) 46–51.
- [99] V. Geoffroy, F. Fouque, C. Benelli, F. Poggi, J.M. Saudubray, W. Lissens, L.D. Meirleir, C. Marsac, J.G. Lindsay, S.J. Sanderson, Defect in the X-lipoyl-containing component of the pyruvate dehydrogenase complex in a patient with a neonatal lactic acidemia, *Pediatrics* 97 (1996) 267–272.
- [100] Y.S. Hong, D.S. Kerr, W.J. Craigen, J. Tan, Y. Pan, M. Lusk, M.S. Patel, Identification of two mutations in a compound heterozygous child with dihydrolipoamide dehydrogenase deficiency, *Hum. Mol. Genet.* 5 (1996) 1925–1930.
- [101] W. Craigen, Leigh disease with deficiency of lipoamide dehydrogenase: treatment failure with dichloroacetate, *Pediatr. Neurol.* 24 (1996) 69–71.
- [102] A. Tripata, D.S. Kerr, M.M. Lusk, M. Kolli, J. Tan, M.S. Patel, Three new mutations of the pyruvate dehydrogenase alpha subunit: a point mutation (M181V), 3 bp deletion (–R282), and 16 bp insertion/frameshift (K358SVS>TVDQS), *Hum. Mutat.* 8 (1996) 180–182.
- [103] T. Fujii, M.B. Garcia-Alvarez, K.F. Sheu, P.J. Kranz-Eble, D.C. De Vivo, Pyruvate dehydrogenase deficiency: the relation of the E1 alpha mutation to the E1 beta subunit deficiency, *Pediatr. Neurol.* 14 (1996) 328–334.
- [104] H. Kinoshita, N. Sakuragawa, H. Tada, E. Naito, Y. Kuroda, I. Nonaka, Recurrent muscle weakness and ataxia in thiamine-responsive pyruvate dehydrogenase complex deficiency, *J. Child Neurol.* 12 (1997) 141–144.
- [105] E. Naito, M. Ito, I. Yokota, T. Saijo, J. Matsuda, H. Osaka, S. Kimura, Y. Kuroda, Biochemical and molecular analysis of an X-linked case of Leigh syndrome associated with thiamine-responsive pyruvate dehydrogenase deficiency, *J. Inher. Metab. Dis.* 20 (1997) 539–548.
- [106] B. Aral, C. Benelli, G. Ait-Ghezala, M. Amessou, F. Fouque, C. Maunoury, N. Creau, P. Kamoun, C. Marsac, Mutations in PDX1, the human lipoyl-containing component X of the pyruvate dehydrogenase-complex gene on chromosome 11p1, in congenital lactic acidosis, *Am. J. Hum. Genet.* 61 (1997) 1318–1326.
- [107] I. Aptowitz, A. Saada, J. Faber, D. Kleid, O.N. Elpeleg, Liver disease in the Ashkenazi-Jewish lipoamide dehydrogenase deficiency, *J. Pediatr. Gastroenterol. Nutr.* 24 (1997) 599–601.
- [108] O.N. Elpeleg, A. Shaag, J.Z. Glustein, Y. Anikster, A. Joseph, A. Saada, Lipoamide dehydrogenase deficiency in Ashkenazi Jews: an insertion mutation in the mitochondrial leader sequence, *Hum. Mutat.* 10 (1997) 256–257.
- [109] Y.S. Hong, D.S. Kerr, T.C. Liu, M. Lusk, B.R. Powell, M.S. Patel, Deficiency of dihydrolipoamide dehydrogenase due to two mutant alleles (E340 K and G101del). Analysis of a family and prenatal testing, *Biochim. Biophys. Acta* 1362 (1997) 160–168.
- [110] C. Marsac, C. Benelli, I. Desguerre, M. Diry, F. Fouque, L. De Meirleir, G. Ponsot, S. Seneca, F. Poggi, J.M. Saudubray, M.T. Zobot, D. Fontan, W. Lissens, Biochemical and genetic studies of four patients with pyruvate dehydrogenase E1 $\alpha$  deficiency, *Hum. Genet.* 99 (1997) 785–792.
- [111] I.D. Wexler, S.G. Hemalatha, J. McConnell, N.R. Buist, H.H. Dahl, S.A. Berry, S.D. Cederbaum, M.S. Patel, D.S. Kerr, Outcome of pyruvate dehydrogenase deficiency treated with ketogenic diets: studies in patients with identical mutations, *Neurology* 49 (1997) 1655–1661.
- [112] L. De Meirleir, N. Specola, S. Seneca, W. Lissens, Pyruvate dehydrogenase E1 $\alpha$  deficiency in a family: different clinical presentation in two siblings, *J. Inher. Metab. Dis.* 21 (1998) 224–226.
- [113] M. Ling, G. McEachern, A. Seyda, N. MacKay, S.W. Scherer, S. Bratinova, B. Beatty, M.L. Giovannucci-Uzielli, B.H. Robinson, Detection of a homozygous four base pair deletion in the protein X gene in a case of pyruvate dehydrogenase complex deficiency, *Hum. Mol. Genet.* 7 (1998) 501–505.
- [114] L. De Meirleir, W. Lissens, C. Benelli, C. Marsac, J. De Klerk, J. Scholte, O. van Diggelen, W. Kleijer, S. Seneca, I. Liebaers, Pyruvate dehydrogenase complex deficiency and absence of subunit X, *J. Inher. Metab. Dis.* 21 (1998) 9–16.
- [115] L.J. Otero, R.M. Brown, G.K. Brown, Arginine 302 mutations in the pyruvate dehydrogenase E1 subunit gene: identification of further patients and in vitro demonstration of pathogenicity, *Hum. Mutat.* 12 (1998) 114–121.
- [116] M.E. Rubio-Gozalbo, A. Heerschap, J.M.F. Trijbels, L. De Meirleir, H.O.M. Thijssen, J.A. M. Smeitink, Proton MR spectroscopy in a child with pyruvate dehydrogenase complex deficiency, *Magn. Reson. Imaging* 17 (1999) 939–944.
- [117] E. Shany, A. Saada, D. Landau, A. Shaag, E. Hershkovitz, O.N. Elpeleg, Lipoamide dehydrogenase deficiency due to a novel mutation in the interface domain, *Biochem. Biophys. Res. Commun.* 262 (1999) 163–166.
- [118] E. Naito, M. Ito, I. Yokota, T. Saijo, S. Chen, M. Maehara, Y. Kuroda, Concomitant administration of sodium dichloroacetate and thiamine in west syndrome caused by thiamine-responsive pyruvate dehydrogenase complex deficiency, *J. Neurol. Sci.* 171 (1999) 56–59.
- [119] W. Lissens, P. Vreken, P.G. Barth, F.A. Wijburg, W. Ruitenbeek, R.J.A. Wanders, S. Seneca, I. Liebaers, L. De Meirleir, Cerebral palsy and pyruvate dehydrogenase deficiency: identification of two new mutations in the E1 gene, *Eur. J. Pediatr.* 158 (1999) 853–857.
- [120] E. Naito, M. Ito, I. Yokota, T. Saijo, Y. Ogawa, K. Shinahara, Y. Kuroda, Gender-specific occurrence of West syndrome in patients with pyruvate dehydrogenase complex deficiency, *Neuropediatrics* 32 (2001) 295–298.
- [121] A. Seyda, K. Chun, S. Packman, B.H. Robinson, A case of PDH-E1 alpha mosaicism in a male patient with severe metabolic lactic acidosis, *J. Inher. Metab. Dis.* 24 (2001) 551–559.
- [122] C. Benelli, F. Fouque, I. Redonnet-Vernhet, M. Malgat, D. Fontan, C. Marsac, R. Dey, A novel Y243S mutation in the pyruvate dehydrogenase E1 alpha gene subunit: correlation with thiamine pyrophosphate interaction, *J. Inher. Metab. Dis.* 25 (2002) 325–327.
- [123] E. Naito, M. Ito, I. Yokota, T. Saijo, Y. Ogawa, Y. Kuroda, Diagnosis and molecular analysis of three male patients with thiamine-responsive pyruvate dehydrogenase complex deficiency, *J. Neurol. Sci.* 201 (2002) 33–37.
- [124] R. Dey, B. Aral, M. Abitbol, C. Marsac, Pyruvate dehydrogenase deficiency as a result of splice-site mutations in the PDX1 gene, *Mol. Genet. Metab.* 76 (2002) 344–347.
- [125] E. Naito, M. Ito, I. Yokota, T. Saijo, J. Matsuda, Y. Ogawa, S. Kitamura, E. Takada, Y. Horii, Y. Kuroda, Thiamine-responsive pyruvate dehydrogenase deficiency in two patients caused by a point mutation (F205L and L216F) within the thiamine pyrophosphate binding region, *Biochim. Biophys. Acta* 1588 (2002) 79–84.
- [126] I.P. Hargreaves, S.J.R. Heales, A. Briddon, P.J. Lee, M.G. Hanna, J.M. Land, Primary pyruvate dehydrogenase deficiency with mild hyperlactatemia and hyperalaninemia, *J. Inher. Metab. Dis.* 26 (2003) 505–506.
- [127] D.J. Zand, E.M. Simon, S.B. Pultizer, D.J. Wang, Z.J. Wang, L.B. Rorke, M. Palmieri, G.T. Berry, In vivo pyruvate detected by MR spectroscopy in neonatal pyruvate dehydrogenase deficiency, *AJNR Am. J. Neuroradiol.* 24 (2003) 1471–1474.
- [128] R. Dey, M. Mine, I. Desguerre, A. Slama, L. Van Den Berghe, M. Brivet, B. Aral, C. Marsac, A new case of pyruvate dehydrogenase deficiency due to a novel mutation in the PDX1 gene, *Ann. Neurol.* 53 (2003) 273–277.
- [129] O. Grafakou, K. Oexle, L. Van den Heuvel, R. Smeets, F. Trijbels, H.H. Goebel, N. Bosshard, A. Superti-Furga, B. Steinmann, J. Smeitink, Leigh syndrome due to compound heterozygosity of dihydrolipoamide dehydrogenase gene mutations: description of the first E3 splice site mutation, *Eur. J. Pediatr.* 163 (2003) 714–718.

- [130] R.M. Brown, R.A. Head, I.I. Bourbriak, J.V. Leonard, G.K. Brown, A pathogenic glutamate to aspartate substitution (D296E) in the pyruvate dehydrogenase E1 subunit gene PDHA1, *Hum. Mutat.* 22 (2003) 496–497.
- [131] G. Mellick, L. Price, R. Boyle, Late-onset presentation of pyruvate dehydrogenase deficiency, *Mov. Disord.* 19 (2004) 727–729.
- [132] R.M. Brown, R.A. Head, I.I. Bourbriak, J.V. Leonard, N.H. Thomas, G.K. Brown, Mutations in the gene for the E<sub>1</sub>β subunit: a novel cause of pyruvate dehydrogenase deficiency, *Hum. Genet.* 115 (2004) 123–127.
- [133] J.M. Cameron, V. Levandovskiy, N. Mackay, I. Tein, B.H. Robinson, Deficiency of pyruvate dehydrogenase caused by novel and known mutations in the E1α subunit, *Am. J. Med. Genet. A* 131 (2004) 59–66.
- [134] R.A. Head, C.G.E.L. de Goede, R.W.N. Newton, J.H. Walter, M.A. McShane, R.M. Brown, G.K. Brown, Pyruvate dehydrogenase deficiency presenting as dystonia in childhood, *Dev. Med. Child Neurol.* 46 (2004) 710–712.
- [135] D.G. Ramadan, R.A. Head, A. Al-Tawari, Y. Habeeb, M. Zaki, F. Al-Ruqum, G.T. Besley, J.E. Wraith, R.M. Brown, G.K. Brown, Lactic acidosis and developmental delay due to deficiency of E3 binding protein (protein X) of the pyruvate dehydrogenase complex, *J. Inher. Metab. Dis.* 27 (2004) 477–485.
- [136] N. Wada, T. Matsuishi, M. Nonaka, E. Naito, M. Yoshino, Pyruvate dehydrogenase E1α subunit deficiency in a female patient: evidence of antenatal origin of brain damage and possible etiology of infantile spasms, *Brain Dev.* 26 (2004) 57–60.
- [137] R.A. Head, R.M. Brown, Z. Zolkipli, R. Shahdadpuri, M.D. King, P.T. Clayton, G.K. Brown, Clinical and genetic spectrum of pyruvate dehydrogenase deficiency: dihydrolipoamide acetyltransferase (E2) deficiency, *Ann. Neurol.* 58 (2005) 234–241.
- [138] M. Tulinius, N. Darin, L.M. Wiklund, E. Holmberg, J.E. Eriksson, W. Lissens, L. De Meirleir, E. Holme, A family with pyruvate dehydrogenase complex deficiency due to a novel C>T substitution at nucleotide position 407 in exon 4 of the X linked E1α gene, *Eur. J. Pediatr.* 164 (2005) 99–103.
- [139] M. Brivet, First characterization of large deletion of the PDHA1 gene, *Mol. Genet. Metab.* 89 (2005) 456–461.
- [140] L.L. Hansen, N. Horn, H.H. Dahl, T.A. Kruse, Pyruvate dehydrogenase deficiency caused by a 33 base pair duplication in the PDH E1 alpha subunit, *Hum. Mol. Genet.* 3 (1994) 1021–1022.
- [141] R.M. Brown, R.A. Head, A.A.M. Morris, J.A.J. Raiman, J.H. Walter, W.P. Whitehouse, G.K. Brown, Pyruvate dehydrogenase E3 binding protein (protein X) deficiency, *Dev. Med. Child Neurol.* 48 (2006) 756–760.
- [142] H.M. Strassburg, J. Koch, J. Mayr, W. Sperl, E. Boltshauser, Acute flaccid paralysis as initial symptom in 4 patients with novel E1α mutations of the pyruvate dehydrogenase complex, *Neuropediatrics* 37 (2006) 137–141.
- [143] J.M. Cameron, V. Levandovskiy, N. Mackay, J. Raiman, D.L. Renaud, J.T.R. Clarke, A. Feigenbaum, O. Elpeleg, B.H. Robinson, Novel mutations in dihydrolipoamide dehydrogenase deficiency in two cousins with borderline-normal complex activity, *Am. J. Med. Genet. A* 140 (2006) 1542–1552.
- [144] M. Schiff, M. Miné, M. Brivet, C. Marsac, M. Elmaleh-Bergès, P. Evrard, H. Ogier de Baulny, Leigh's disease due to a new mutation in PDHX gene, *Ann. Neurol.* 59 (2006) 709–714.
- [145] K. Okajima, M.L. Warman, L.C. Byrne, D.S. Kerr, Somatic mosaicism in a male with an exon skipping mutation in PDHA1 of the pyruvate dehydrogenase complex results in a milder phenotype, *Mol. Genet. Metab.* 87 (2006) 162–168.
- [146] M. Willemsen, R.J. Rodenburg, A. Teszas, L. van den Heuvel, G. Kosztolanyi, E. Morava, Females with PDHA1 gene mutations: a diagnostic challenge, *Mitochondrion* 6 (2006) 155–159.
- [147] F.G. Debray, M. Lambert, M. Vanasse, J.C. Decarie, J. Cameron, V. Levandovskiy, B. H. Robinson, G.A. Mitchell, Intermittent peripheral weakness as the presenting feature of pyruvate dehydrogenase deficiency, *Eur. J. Pediatr.* 165 (2006) 462–466.
- [148] J.P. Soares-Fernandes, R. Teixeira-Gomes, R. Cruz, M. Ribeiro, Z. Magalhães, J.F. Rocha, L.M. Leijser, Neonatal pyruvate dehydrogenase deficiency due to a R302H mutation in the PDHA1 gene: MRI findings, *Pediatr. Radiol.* 38 (2008) 559–562.
- [149] C.K. Ridout, R.M. Brown, J.H. Walter, G.K. Brown, Somatic mosaicism for a PDHA1 mutation in a female with pyruvate dehydrogenase deficiency, *Hum. Genet.* 124 (2008) 187–193.
- [150] F. Sedel, G. Challe, J.M. Mayer, A. Boutron, B. Fontaine, J.M. Saudubray, M. Brivet, Thiamine responsive pyruvate dehydrogenase deficiency in an adult with peripheral neuropathy and optic neuropathy, *J. Neurol. Neurosurg. Psychiatry* 79 (2008) 846–847.
- [151] Z. Han, L. Zhong, A. Srivastava, P.W. Stacpoole, Pyruvate dehydrogenase complex deficiency caused by ubiquitination and proteasome-mediated degradation of the E1β subunit, *J. Biol. Chem.* 283 (2008) 237–244.
- [152] K. Okajima, L.G. Korotchkina, C. Prasad, Mutations of the E1β subunit gene (PDHB) in four families with pyruvate dehydrogenase deficiency, *Mol. Genet. Metab.* 93 (2008) 371–380.
- [153] A. Boichard, L. Venet, T. Naas, A. Boutron, L. Chevret, H.O. de Baulny, P. De Lonlay, A. Legrand, P. Nordman, M. Brivet, Two silent substitutions in the PDHA1 gene cause exon 5 skipping by disruption of putative exonic splicing enhancer, *Mol. Genet. Metab.* 93 (2008) 323–330.
- [154] F.G. Debray, M. Lambert, R. Gagne, B. Maranda, R. Laframboise, N. MacKay, B.H. Robinson, G.A. Mitchell, Pyruvate dehydrogenase deficiency presenting as intermittent isolated acute ataxia, *Neuropediatrics* 39 (2008) 20–23.
- [155] E. Ostergaard, L.B. Moller, H.S. Kalkanoglu-Sivri, A. Dursun, M. Kibaek, T. Thelle, E. Christensen, M. Duno, F. Wibrand, Four novel PDHA1 mutations in pyruvate dehydrogenase deficiency, *J. Inher. Metab.* (In press).
- [156] J. Small, G. Gonzales, K. Nagao, D.S. Walton, P.A. Caruso, Optic neuropathy in a patient with pyruvate dehydrogenase deficiency, *Pediatr. Radiol.* 39 (2009) 1114–1117.
- [157] R. Bachmann-Gagescu, J. Lawrence Merritt II, S.H. Hahn, A cognitively normal PDH-deficient 18-year old man carrying the R263G mutation in the PDHA1 gene, *J. Inher. Metab. Dis.* (In press).
- [158] E. Quintana, J.A. Mayr, M.T. Garcia Silva, A. Font, M.A. Tortoledo, S. Moliner, L. Ozaez, M. Lluch, A. Cabello, J.R. Ricoy, J. Koch, A. Ribes, W. Sperl, P. Briones, PDH E(1)β deficiency with novel mutations in two patients with Leigh syndrome, *J. Inher. Metab. Dis.* (In press).
- [159] M. João Silva, A. Pinheiro, F. Eusébio, A. Gaspar, I. Tavares de Almeida, I. Rivera, Pyruvate dehydrogenase deficiency: identification of a novel mutation in the PDHA1 gene which responds to amino acid supplementation, *Eur. J. Pediatr.* 168 (2009) 17–22.
- [160] C. Barnerias, J.M. Saudubray, G. Touati, P. De Lonlay, O. Dulac, G. Ponsot, C. Marsac, M. Brivet, I. Desguerre, Pyruvate dehydrogenase complex deficiency: four neurological phenotypes with differing pathogenesis, *Dev. Med. Child Neurol.* 52 (2010) e1–e9.
- [161] C.R. Coughlin, I.D. Krantz, E.S. Scmitt, S. Zhang, L.J. Wong, D.S. Kerr, J. Ganesh, Somatic mosaicism for PDHA1 mutation I a male with pyruvate dehydrogenase complex deficiency, *Mol. Genet. Metab.* 100 (2010) 296–299.
- [162] S. Sato, H. Ioi, Y. Kashiwagi, H. Kawashima, T. Miyajima, E. Naito, A. Hoshika, Novel mutation (R263X) of the E1α subunit in pyruvate dehydrogenase complex deficiency, *Pediatr. Int.* 52 (2010) e181–e183.
- [163] C.A. McWilliam, C.K. Ridout, R.M. Brown, R.C. McWilliam, J. Tolmie, G.K. Brown, Pyruvate dehydrogenase E2 deficiency: a potentially treatable cause of episodic dystonia, *Eur. J. Paediatr. Neurol.* 14 (2010) 349–353.
- [164] E. Quintana, L. Gort, C. Busquets, A. Navarro-Sastre, W. Lissens, S. Moliner, M. Lluch, M.A. Vilaseca, L. De Meirleir, A. Ribes, P. Briones, PDH working group. Mutational study in the PDHA1 gene of 40 patients suspected of pyruvate dehydrogenase complex deficiency, *Clin. Genet.* 77 (2010) 474–482.
- [165] B.H. Robinson, W.G. Sherwood, Lactic acidemia, the prevalence of pyruvate decarboxylase deficiency, *J. Inher. Metab. Dis.* 7 (1984) 69.
- [166] C.R. Coughlin II, C. Haldeman-Englert, I.D. Krantz, E.S. Schmitt, et al., Somatic mosaicism for PDHA1 mutation in male with pyruvate dehydrogenase deficiency, 11th Intern Cong Inborn Errors Metab, September, 2009.
- [167] M.Y. Lib, R.M. Brown, G.K. Brown, M.F. Marusch, et al., Detection of pyruvate dehydrogenase E1α-subunit deficiencies in females by immunohistochemical demonstration of mosaicism in cultured fibroblasts, *J. Histochem. Cytochem.* 50 (2002) 877–884.
- [168] W. Lissens, L. De Meirleir, S. Seneca, I. Liebaers, et al., Mutations in the X-linked pyruvate dehydrogenase (E1) alpha subunit gene (PDHA1) in patients with a pyruvate dehydrogenase complex deficiency, *Hum. Mutat.* 15 (2000) 209–219.
- [169] J.M. Cameron, V. Levandovskiy, N. MacKay, I. Tein, et al., Deficiency of pyruvate dehydrogenase caused by novel and known mutations in the E1α subunit, *Am. J. Med. Genet.* 131A (2004) 59–66.
- [170] M. Brivet, M.L. Moutard, M. Zater, L. Venet, et al., First characterization of a large deletion of the PDHA1 gene, *Mol. Genet. Metab.* 86 (2004) 456–461.
- [171] M. Mine, M. Brivet, M. Schiff, H. Ogier, et al., A novel gross deletion caused by non-homologous recombination of the PDHX gene in a patient with pyruvate dehydrogenase deficiency, *Mol. Genet. Metab.* 89 (2006) 106–110.
- [172] J.P. Soares-Fernandes, R. Teixeira-Gomes, R. Cruz, M. Ribeiro, et al., Neonatal pyruvate dehydrogenase deficiency due to a R302H mutation in the PDHA1 gene: MRI findings, *Pediatr. Radiol.* 38 (2008) 559–562.
- [173] C.K. Ridout, P. Keighley, S. Krywawych, R.M. Brown, et al., A putative exonic splicing enhancer in exon 7 of the PDHA1 gene affects splicing of adjacent exons, *Hum. Mutat.* 29 (2008) 451–463.
- [174] E. Ostergaard, L. Birk Moller, H. Serap Kalkanoglu-Sivri, A. Dursun, et al., Four novel PDHA1 mutations in pyruvate dehydrogenase deficiency, *J. Inher. Metab. Dis.* 115 (2009) 123–127.
- [175] P. Kaufmann, J.M. Pascual, Y. Anziska, C.L. Gooch, et al., Nerve conduction abnormalities in patients with MELAS and the A3243G mutation, *Arch. Neurol.* 63 (2006) 746–748.
- [176] R.H. Baloh, Mitochondrial dynamics and peripheral neuropathy, *Neuroscientist* 14 (2008) 12–18.
- [177] S. DiMauro, E.A. Schon, Mitochondrial disorders in the nervous system, *Annu. Rev. Neurosci.* 31 (2008) 91–123.
- [178] M. Karpapa, P. Syrjala, U. Tolonen, K. Majamaa, Peripheral neuropathy in patients with the 3243A>G mutation in mitochondrial DNA, *J. Neurol.* 250 (2003) 216–221.
- [179] D.S. Kerr, Treatment of congenital lactic acidosis: a review, *Int. Pediatr.* 10 (1995) 75–81.
- [180] E.H. Kossoff, B.A. Zupce-Kania, P.E. Amark, K.R. Ballaban-Gil, et al., Optimal clinical management of children receiving the ketogenic diet: recommendations of the International Ketogenic Diet Study Group, *Epilepsia* 50 (2009) 304–317.
- [181] P.W. Stacpoole, The pharmacology of dichloroacetate, *Metabolism* 38 (1989) 1124–1144.
- [182] Z. Han, K. Berendzen, L. Zhong, I. Surolia, et al., A combined therapeutic approach for pyruvate dehydrogenase deficiency using self-complementary adeno-associated virus serotype-specific vectors and dichloroacetate, *Mol. Genet. Metab.* 93 (2008) 381–387.
- [183] G.E. Duncan, L.A. Perkins, D.W. Theriaque, R.E. Neiberger, et al., Dichloroacetate therapy attenuates the blood lactate response to submaximal exercise in patients with defects in mitochondrial energy metabolism, *J. Clin. Endocrinol. Metab.* 89 (2004) 1733–1738.
- [184] P.W. Stacpoole, D.S. Kerr, C. Barnes, S.T. Bunch, P.R. Carney, et al., A controlled clinical trial of dichloroacetate for treatment of congenital lactic acidosis in children, *Pediatrics* 117 (2006) 1519–1531.
- [185] P. Kaufmann, K. Engelstad, Y. Wei, S. Jhung, et al., Dichloroacetate causes toxic neuropathy in MELAS: a randomized, controlled clinical trial, *Neurology* 66 (2006) 324–330.